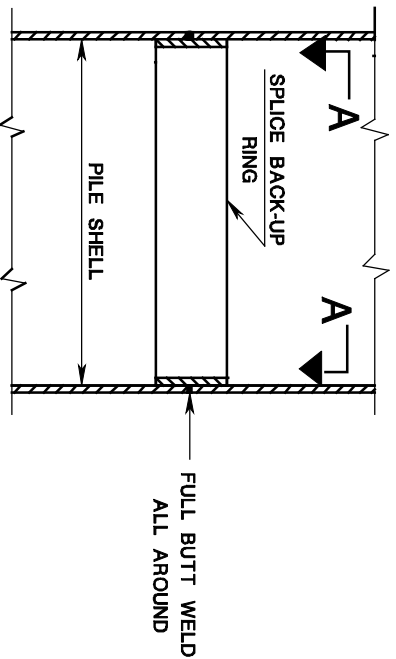


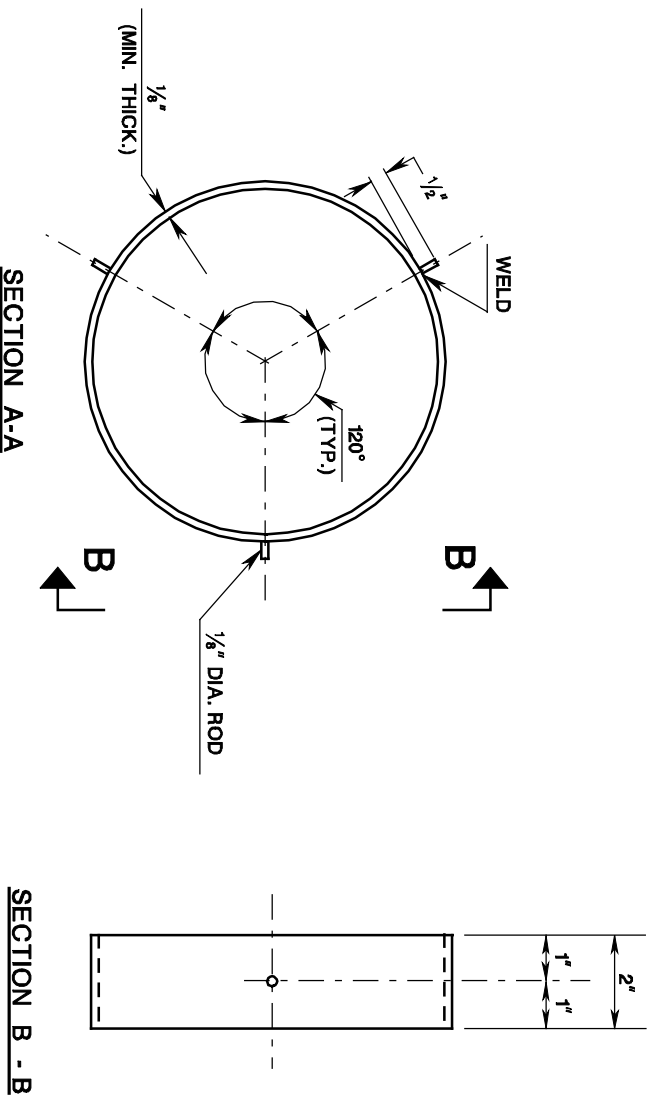
# PILE SPLICE FOR CAST-IN-PLACE CONCRETE PILES

ISSUED: 2009

PLATE  
3.11-2



SPLICE DETAIL



## NOTES:

1. APPROVED COMMERCIAL PILE SPLICE BACK-UP RING MAY BE USED IN LIEU OF THE TYPE DETAILED. BACK-UP RING SHALL HAVE A TIGHT FIT.
2. WELDING SHALL BE AS PER A.W.S. REQUIREMENTS.